



# **C\*CERT+**

---

**New Feature Highlights**  
**Version 4.1.0.0**

## NEW Features

The following list identifies the New Features released with C\*CERT+ v4.1.0.0

Item	Module	Update	DB Types Affected	Page
1	Report Configuration	Actuals To Date Time-phasing	Flex File	3
2	Report Configuration	Calculate Flex File Periods	Flex File	4
3	Rec/Non Rec Mapping	Map at Resource Level	Flex File	5
4	Source Data Import	Do Not Consolidate	Legacy and Flex File	6
5	COBRA Connection	New Connection Database Required	Legacy and Flex File	7
6	Import JSON	Output to cPET 3 Part Template	Flex File	8

## Actuals To Date Time-phasing

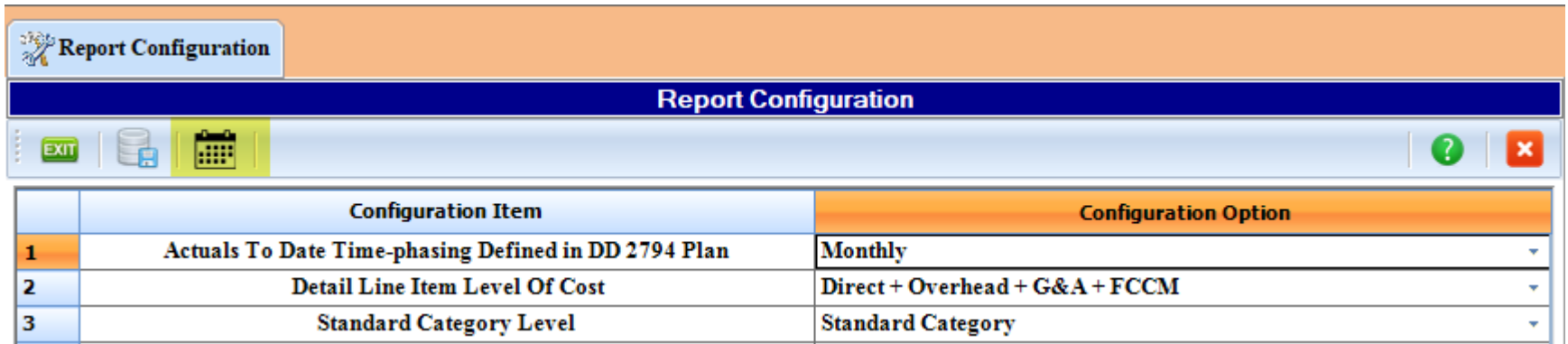
FlexFile submission requires that the Actual To Date costs and hours be reported in monthly increments consistent with the Reporting Entity's reporting calendar, unless otherwise indicated by the CWIPT and documented through the Remarks section (Block 15) of the approved CSDR Plan and/or FlexFile CDRL. Reporting by month does not apply to the FACs.

A (DD 2794) Plan could be tailored to periods with a duration longer than one month. The report still requires the Reporting Period to be reported. Periods longer than a month can include the entire period of performance to date. For example, if the DD 2794 Plan identifies actual costs and hours be reported by quarter instead of by month, each dollar and hour report should be tagged to a Reporting Period Start Date and a Reporting Period End Date which are consistent with the three-month period. The Reporting Period End Date in this example will be determined by the Reporting Entity's financial calendar.

C\*CERT+ now provides 4 Timephasing Options for Actuals To Date: • Monthly - this will always be the default • Quarterly - 3 month intervals • Bi-Annual - 6 month intervals • Annual - 12 month intervals Interval scenarios greater than Monthly will be setup based on the month selected in the Report Configuration Process.

Report Configuration		
Report Configuration		
Configuration Item	Configuration Option	
1	Actuals To Date Time-phasing Defined in DD 2794 Plan	Monthly
2	Detail Line Item Level Of Cost	Monthly
3	Standard Category Level	Quarterly
4	Unit/Sublot Allocation Level	Bi-Annual
5	First Unit/Last Unit Sequence Required	Annual
6	CLIN Source and Mapping	NO
7	Functional Category Field	Use C*CERT+ Internal CLIN Field
8	Forecast At Completion By Recurring/NonRecurring Required	Type
9	Forecast At Completion By Standard Category Required	YES
10	G&A as Standard Category	YES
11	FCCM As Standard Category	YES
12	ETC/FAC exists at the same Hierarchy Level as Actuals	YES
13	Zero Actual Submittal	NO
14	Validations and JSON output Format Number of Decimal Places (Def	4
15	Recurring/Non Recurring Source and Mapping	Use C*CERT+ R/NR Mapping

## Calculate Flex File Periods



	Configuration Item	Configuration Option
1	Actuals To Date Time-phasing Defined in DD 2794 Plan	Monthly
2	Detail Line Item Level Of Cost	Direct + Overhead + G&A + FCCM
3	Standard Category Level	Standard Category

C\***CERT+** allows the importing of a Calendar with an unlimited set of periods. During the importing of this Calendar, C\***CERT+** begins the Period Indexing with the first period record at index 1 followed by each imported period incremented by 1.

The Flex File requirement for the Calendar JSON table is that the first record in this Table has an order index of 1 followed by the remaining periods incremented by 1. It also requires the Calendar to only include periods that fall within the Meta Data POP Start and POP Finish dates.

Given that the imported Calendar can have far more Periods than what is identified in the Meta Data POP Start and POP Finish - it is required to perform a "Calculate Flex File Periods" process in order to align the Imported Calendar Periods with the JSON Table Periods indexing appropriately.

"Calculate Flex File Periods" has been introduced in v4.1.0.0 in order to:

- Align the Source Calendar data to the JSON Calendar base on the Meta Data POP Start and POP Finish dates
- Support for the new Actuals To Date Timephasing options in Report Configuration.

"Calculate Flex File Periods" will now be required to be performed after updating Meta Data POP Start and POP Finish

## Recurring/Non Recurring Options

There are now 3 options for Recurring/Non Recurring mapping within Report Configuration:

- Use C\*CERT+ R/NR Coding - all Recurring and Non Recurring mapping is performed within C\*CERT+
  - Rec/Non Rec coding resides at the Account Level
  - A Single Account can only be Recurring or Non Recurring
  
- Use Incoming Source Data field - Recurring and Non Recurring was performed within the Source System and Lookup Values are selected for C\*CERT+ to use.
  - Rec/Non Rec coding resides at the Account Level
  - A Single Account can only be Recurring or Non Recurring
  
- Use Resource TAG Field - Recurring and Non Recurring was performed within the Source System and Lookup values are selected for C\*CERT+ to use.
  - Rec/Non Rec coding resides at the TRANSACTION or Functional Category Record level • Transactional Records within an Account can be either Recurring or Non Recurring

Report Configuration		Configuration Option
Configuration Item		
1	Actuals To Date Time-phasing Defined in DD 2794 Plan	Monthly
2	Detail Line Item Level Of Cost	Direct + Overhead + G&A + FCCM
3	Standard Category Level	Detailed Standard Category
4	Unit/Sublot Allocation Level	Touch Labor Cost Only
5	First Unit/Last Unit Sequence Required	NO
6	CLIN Source and Mapping	CLIN
7	Functional Category Field	Type
8	Forecast At Completion By Recurring/NonRecurring Required	YES
9	Forecast At Completion By Standard Category Required	YES
10	G&A as Standard Category	YES
11	FCCM As Standard Category	YES
12	ETC/FAC exists at the same Hierarchy Level as Actuals	YES
13	Zero Actual Submittal	NO
14	Validations and JSON output Format Number of Decimal Places (Default = 4)	4
15	Recurring/Non Recurring Source and Mapping	RecNonRec
16	Recurring Lookup Value	1
17	Non Recurring Lookup Value	2

## Do Not Consolidate during Import

The new Do Not Consolidate during Import option is now available for both Legacy and Flex File CCDR Reporting.

The default setting is to naturally Consolidate LIKE WBS Elements that occur across multiple Projects/Contracts should multiple Projects/Contracts be imported.

**Once a Database has been flagged as Consolidate or Do Not Consolidate it cannot be change to ther other.**



## COBRA Connection

Connecting to a COBRA database has been updated.

A Connections Database is now required to be created by the C\*CERT+ Administrator and/or the IT Database Administrator and deployed to all COBRA users.

The C\*CERT+ Administrator and/or IT Database Administrator can use the new C\*CERT+ DB Connections Manager Application which is an option to install during the C\*CERT+ Installation Process.

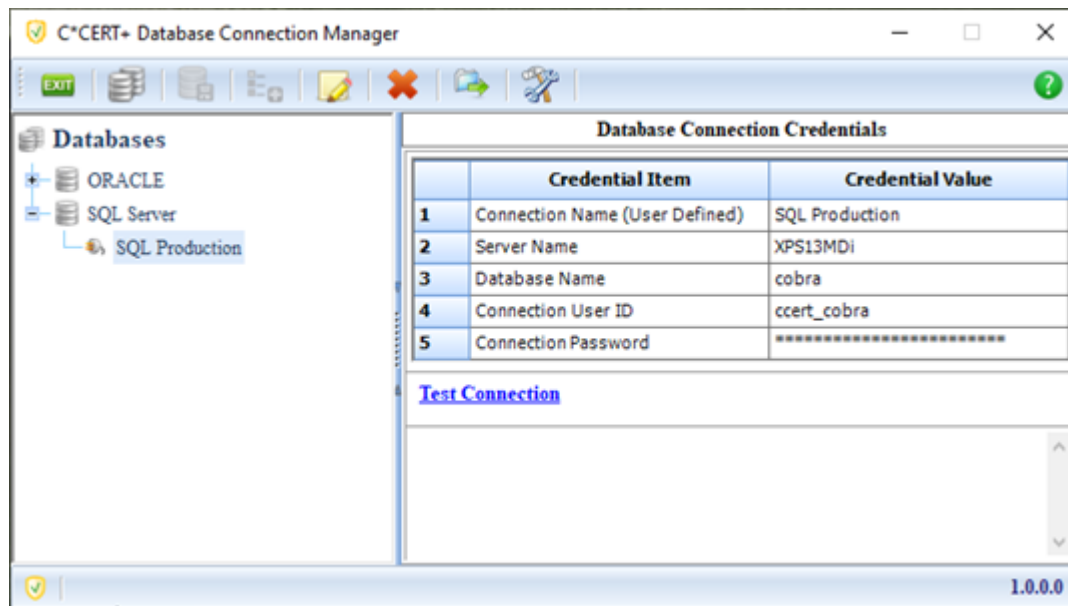
Windows Authentication has also been implemented

Prior to having the capability to Connect to a Cobra Database, the C\*CERT+ Connections Database location must be identified.

The C\*CERT+ Connections Database is a Database file that is created/updated by the C\*CERT+ Administrator or the Database Administrator using the C\*CERT+ Database Connections Management (DCM) application.

- The Database file has all the necessary Cobra Database Connections and connection credentials
- The Administrator will deploy the Connections Database to either a Share Folder location for all C\*CERT+ users or directly to each C\*CERT+ User
- The Connections Database file name is: "ccertconnections.dbcon"

C\*CERT+ DB Connections Manager Application



## JSON Import - Output to cPET 3 part Template

C\*CERT+ will send the imported JSON tables out to the cPET 3 Part Excel Templates if so desired.

This is simply an option and not required.

If this option is going to be selected, it is advised that ALL JSON Tables within the selected Cost Hour Flex File or the selected Quantity Data Flex File be selected to import into C\*CERT+.

Perform the Import JSON process first, then the output to cPET 3 Workbooks option will be enabled.

Note: All Validations should be fixed PRIOR to outputting to the cPET 3 Part Excel Templates.

